

12 Wentworth Court
Darras Hall
Ponteland
NE209PR

£685,000

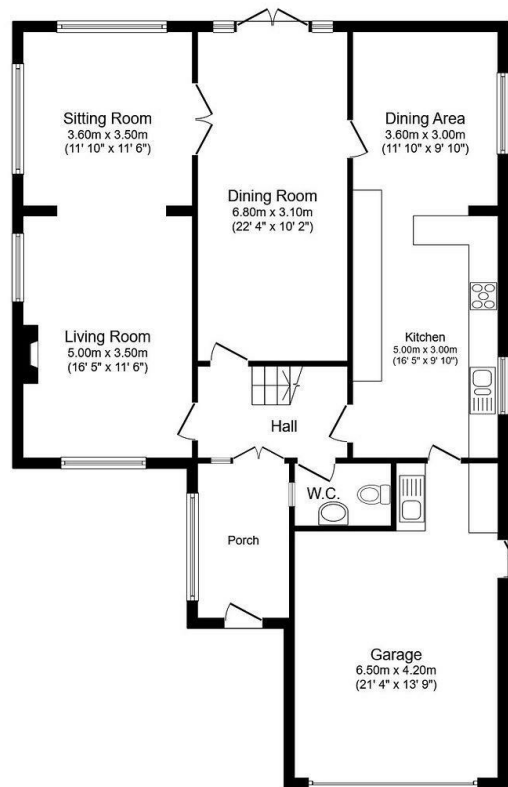


12 Wentworth Court
Darras Hall
Ponteland
NE209PR

- 4 Bedrooms
- Living and Sun Room
- Kitchen/Breakfast Room
- Garage with Utility Area
- South Facing Rear Garden
- Extended House
- Dining/Sitting Room
- Bathroom & Cloaks/ WC
- Close to School & Shops

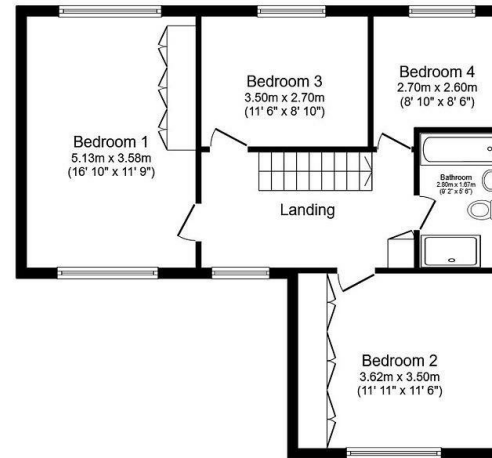






Ground Floor

Floor area 120.6 sq.m. (1,298 sq.ft.)



First Floor

Floor area 66.6 sq.m. (717 sq.ft.)

Total floor area: 187.1 sq.m. (2,014 sq.ft.)

This floor plan is for illustrative purposes only. It is not drawn to scale. Any measurements, floor areas (including any total floor area), openings and orientations are approximate. No details are guaranteed, they cannot be relied upon for any purpose and do not form any part of any agreement. No liability is taken for any error, omission or misstatement. A party must rely upon its own inspection(s).



EPC Rating: C
Council Tax Band: F

Whilst every care has been taken to prepare these particulars, they are for guidance purposes only. All measurements are approximate and whilst every care has been taken to ensure their accuracy, they should not be relied upon and potential buyers/tenants are advised to recheck the measurements. The agent has not tested any equipment, services, fixtures or fittings and makes no representation regarding their condition.

CONTACT

11 West Road, Ponteland,
Northumberland, NE20 9SU

E: ponteland@goodfellowsestateagents.com
T: 01661 829164

